

## Mechanical Valves: 3-Way Spool Valves

### Directair 2 Series (1/8" NPT) & Directair 4 Series (1/4" NPT)

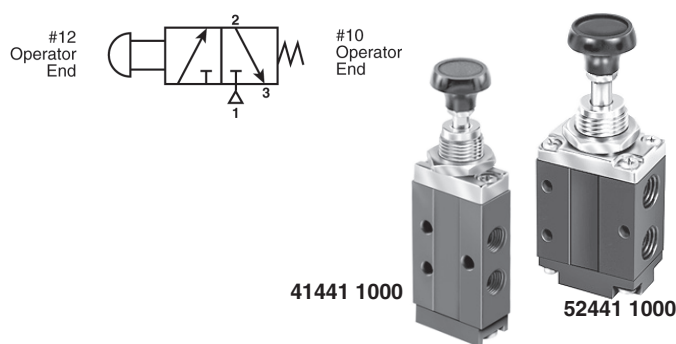
Vacuum to 150 PSI

1/8" - 0.20 C<sub>v</sub>

1/4" - 0.83 C<sub>v</sub>

#### Button Operated

- W 41441 1000 1/8 npt, Button Operated, Spring Return
- W 52441 1000 1/4 npt, Button Operated, Spring Return



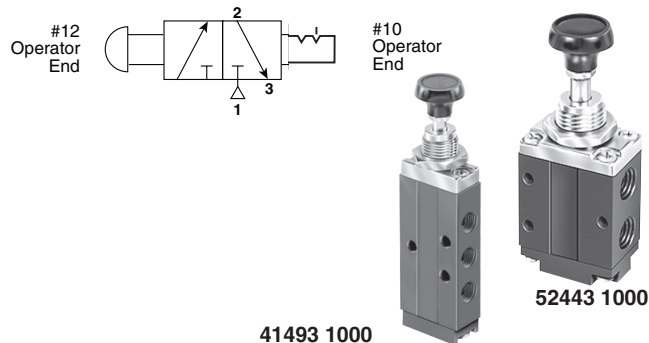
#### Spring Return

Normal Position – Pressure at Inlet port 1 is blocked.  
Outlet port 2 is connected to Exhaust port 3.

Actuated Position – Pressure at Inlet port 1 is connected to  
Outlet port 2. Exhaust port 3 is blocked.

#### Button Operated

- W 41493 1000 1/8 npt, Button Operated, Manual Return
- W 52443 1000 1/4 npt, Button Operated, Manual Return



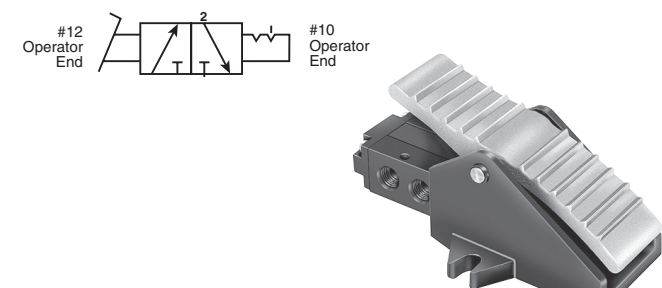
#### Spring Return

Operated pulled last – Pressure at Inlet port 1 is blocked.  
Outlet port 2 is connected to Exhaust port 3.

Operated pushed last – Pressure at Inlet port 1 is  
connected to Outlet port 2. Exhaust port 3 is blocked.

#### Treadle Operated

- W 52493 1000 1/4 npt, Treadle Operated, Detented



#### Treadle

Toe pressed last – Pressure at Inlet port 1 is blocked.  
Outlet port 2 is connected to Exhaust port 3.

Heel pressed last – Pressure at Inlet port 1 is connected to  
Outlet port 2. Exhaust port 3 is blocked.

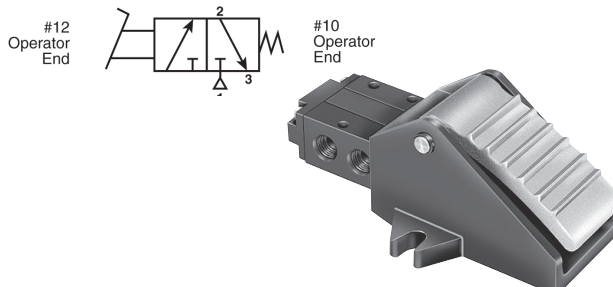


#### CAUTION:

*This valve shall not be used to actuate a punch press.  
Do not use this valve on punch presses or press brakes.*

#### Pedal Operated

- W 52471 1000 1/4 npt, Pedal Operated, Spring Return



#### Pedal

Normal Position – Pressure at Inlet port 1 is blocked.  
Outlet port 2 is connected to Exhaust port 3.

Actuated Position – Pressure at Inlet port 1 is connected to  
Outlet port 2. Exhaust port 3 is blocked.



#### CAUTION:

*This valve shall not be used to actuate a punch press.  
Do not use this valve on punch presses or press brakes.*

Note: For conversion factors see page 54

## Mechanical Valves: 3-Way Spool Valves

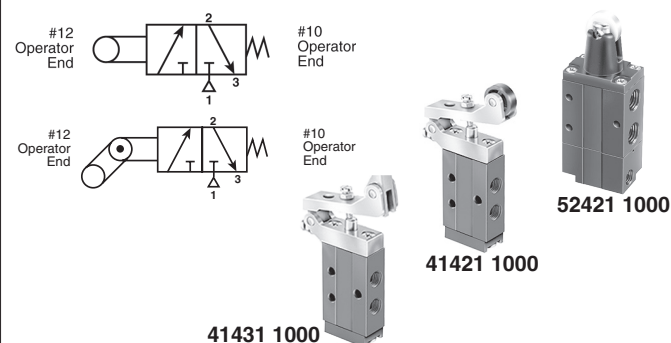
### Directair 2 Series (1/8" NPT) & Directair 4 Series (1/4" NPT)

Vacuum to 150 PSI

1/8" - 0.20 C<sub>v</sub> 1/4" - 0.83 C<sub>v</sub>

#### Roller/One-Way Tripper Operated

- W 41421 1000 1/8 npt, Roller Operated, Spring Return
- W 41431 1000 1/8 npt, One-Way Tripper, Spring Return
- W 52421 1000 1/4 npt, Delrin Roller Operated, Spring Return



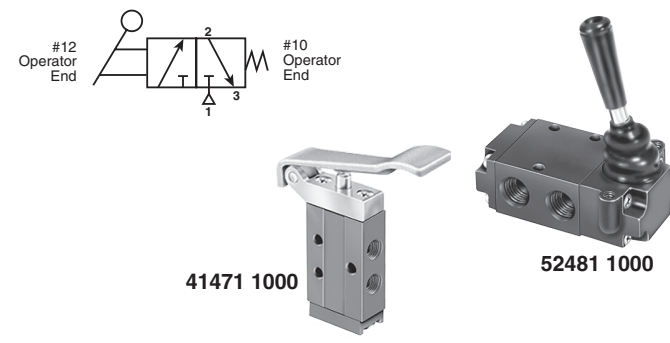
#### Roller

Normal Position – Pressure at Inlet port 1 is blocked. Outlet port 2 is connected to Exhaust port 3.

Actuated Position – Pressure at Inlet port 1 is connected to Outlet port 2. Exhaust port 3 is blocked.

#### Lever/Hand Operated

- 41471 1000 1/8 npt, Hand Lever Operated, Spring Return
- W 52481 1000 1/4 npt, Lever Operated, Spring Return



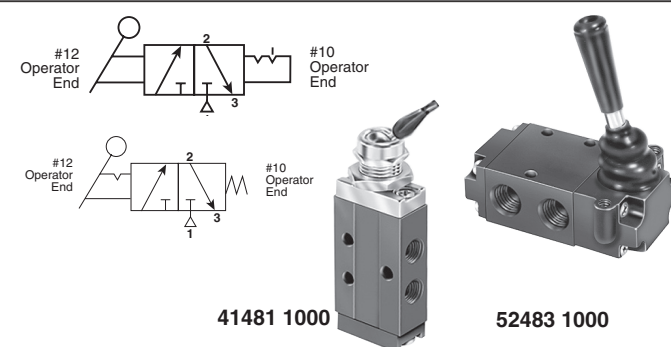
#### Spring Return

Normal Position – Pressure at Inlet port 1 is blocked. Outlet port 2 is connected to Exhaust port 3.

Actuated Position – Pressure at Inlet port 1 is connected to Outlet port 2. Exhaust port 3 is blocked.

#### Toggle/Lever Operated

- W 41481 1000 1/8 npt, Toggle Operated, Detented
- 52483 1000 1/4 npt, Lever Operated, Manual Return



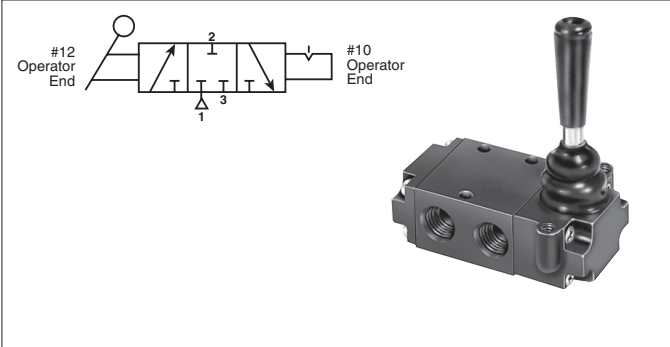
#### Manual Return

Operated pushed last (toward body) – Pressure at Inlet port 1 is blocked. Outlet port 2 is connected to Exhaust port 3.

Operated pulled last (away from body) – Pressure at Inlet port 1 is connected to Outlet port 2. Exhaust port 3 is blocked.

#### Lever Operated - 3-Position

- W 52383 1000 1/4 npt, Lever Operated, 3-Position Detented, All Ports Blocked



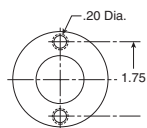
#### Lever

Operated pushed last (toward body) – Pressure at Inlet port 1 is blocked. Outlet port 2 is connected to Exhaust port 3.

Operated pulled last (away from body) – Pressure at Inlet port 1 is connected to Outlet port 2. Exhaust port 3 is blocked.

Center Position – All ports blocked.

### Panel Mounting Kit No. 52083 8004



Available for panel mounting direct pipe ported, lever operated  
"Directair 4" Series valves only. Kit includes a flange and two screws.

Note: For conversion factors see page 54

