



DURBIN

INDUSTRIAL VALVE, INC.

*Sinclair Collins Replacements:
1/4" Restricted Flow 500 PSI Valve



*Durbin Valve is not affiliated with Sinclair Collins

Media Uses:

- Air, cold water, hot water, inert gases, steam, or vacuum service

Features:

- Soft Seated, Class VI positive shut off valve
- Pneumatically operated directional valve
- Port Sizes: 1/4"
- System pressures: up to a maximum of 500 psi (34 bar)
- Diaphragm Pilot air pressure maximum: 40 psi (2.8 bar)
- Offered in In-line Porting
- Offered in Normally Open, Normally Closed, or Mixing Valve
- Available ports in Standard NPT & BSP threads
- System temperature ranges -40°F to 450°F (-40°C to 231°C)
- Wetted components constructed of machined corrosion resistant stainless steel
- Engineered sealing edge meets highest ANSI/FCI 70-2 Class VI leakage rate standards

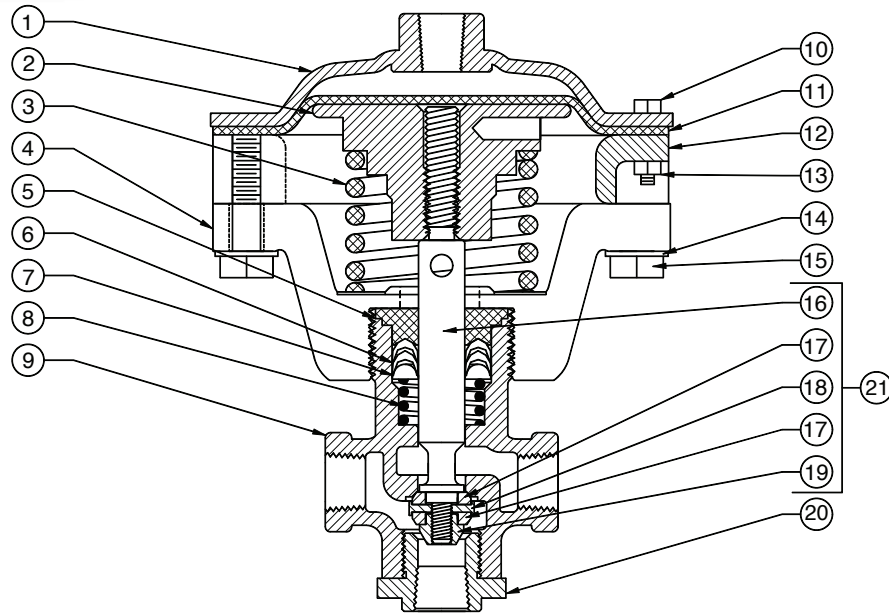
Benefits:

- Re-buildable valve; rebuild services offered by Durbin Industrial Valve, Inc., or field serviceable with Durbin Industrial Valve, Inc. Rebuild Kits
- Superior materials; more corrosion resistant materials that offer longer valve life
- Engineered for harsher applications; improved seal & seat materials



DURBIN

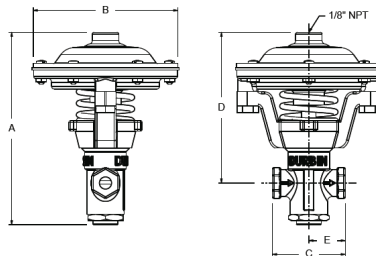
INDUSTRIAL VALVE, INC.



* Included in service kit

1/4" Restricted Flow 500		
NORMAL VALVE SIDE		1/4" 3W NORMALLY CLOSED
VALVE NUMBER		D204-00031
Cv RATING		
ITEM	DESCRIPTION	1/4" NPT
1	COVER/LID	M163-005D
2	SPRING RETAINER/PISTON	C783-141D
3	DIAPHRAGM SPRING	D293-130D
4	YOKE	D283-184D
5*	SPRING RETAINER/PISTON	C603-030D
6*	PACKERS KIT	C242-024D
7	PACKING SPREADER	C713-017D
8	PACKING SPRING	D293-131D
9	BODY	C093-329D
10	LID BOLT	H109-09D
11*	DIAPHRAGM	C333-056D
12	RING	M423-002D
13	LID NUT	H064-16D
14	LOCK WASHER	H175-16D
15	YOKE BOLT	H096-84D
16	STEM	D093-279D
17*	SOFT SEAT SEAL (X2)	C343-067D
18*	SEAL WASHER	C353-011D
19*	SEAL NUT	C553-027D
20	BOTTOM SEAT	C973-064D
21	STEM ASSEMBLY	C332-124
	SERVICE KIT	C242-074D

NOMINAL VALVE SIZE	PORT TAP NPT	DESCRIPTION		PSI	BAR	CV			
						PORT 1 TO PORT 2	PORT 2 TO PORT 1	PORT 2 TO PORT 3	PORT 3 TO PORT 2
1/4"	1/4"	SOFT	MODEL	D204-00031		1.41	1.61	2.11	2.41
			PRESSURE RATING	500	34				
VALVE TYPE				PIPING CONNECTIONS					
				PORT 1		PORT 2		PORT 3	
2-WAY		NORMALLY OPEN ANGLE PIPED		PLUGGED		CYLINDER OR INLET		INLET OR CYLINDER	
		NORMALLY CLOSED INLINE PIPED		INLET		CYLINDER		PLUGGED	
3-WAY		NORMALLY OPEN		DRAIN		CYLINDER		INLET	
		NORMALLY CLOSED		INLET		CYLINDER		DRAIN	
3-PORT		DIRECTIONAL VALVE		OUTLET		INLET		OUTLET	
		MIXING VALVE		INLET		OUTLET		INLET	



D204-00031 Valve Dimensions

BASIC VALVE SIZE	TAP SIZE	A	B	C	D	E
1/4"	1/4"	INCH 5.65	4.31	2.19	4.39	1.10
		mm 143.50	109.50	35.6	110.20	17.80

Cv Rating based on NPT threads • N/O is Normally Open and N/C is Normally Closed

Please contact us for more information at 330.724.9968 or visit us online at www.durbinvalve.com